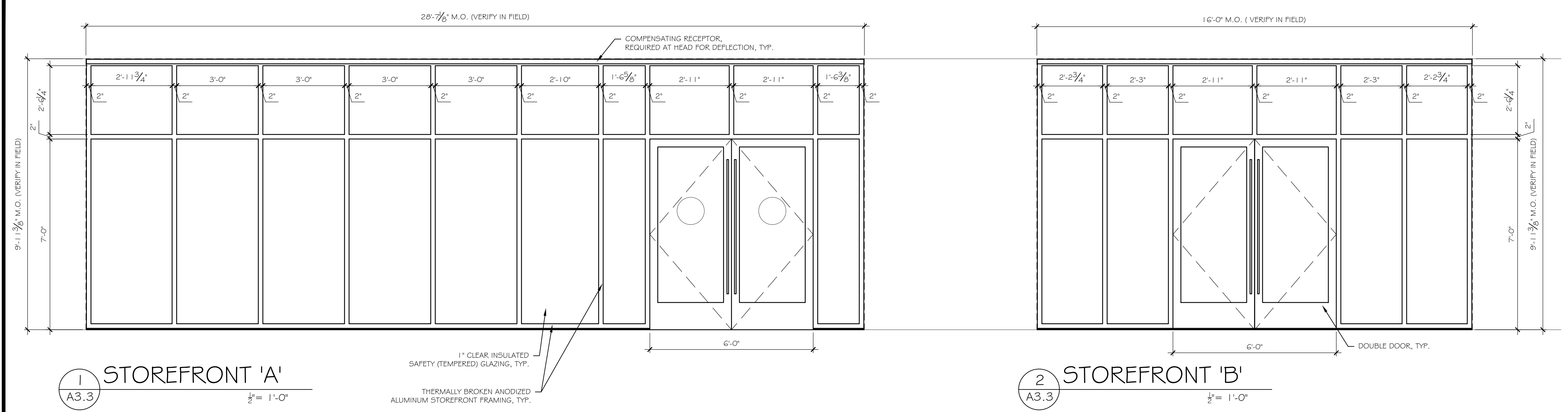


REVISIONS	BY



1 STOREFRONT 'A'
A3.3 1/8" = 1'-0"

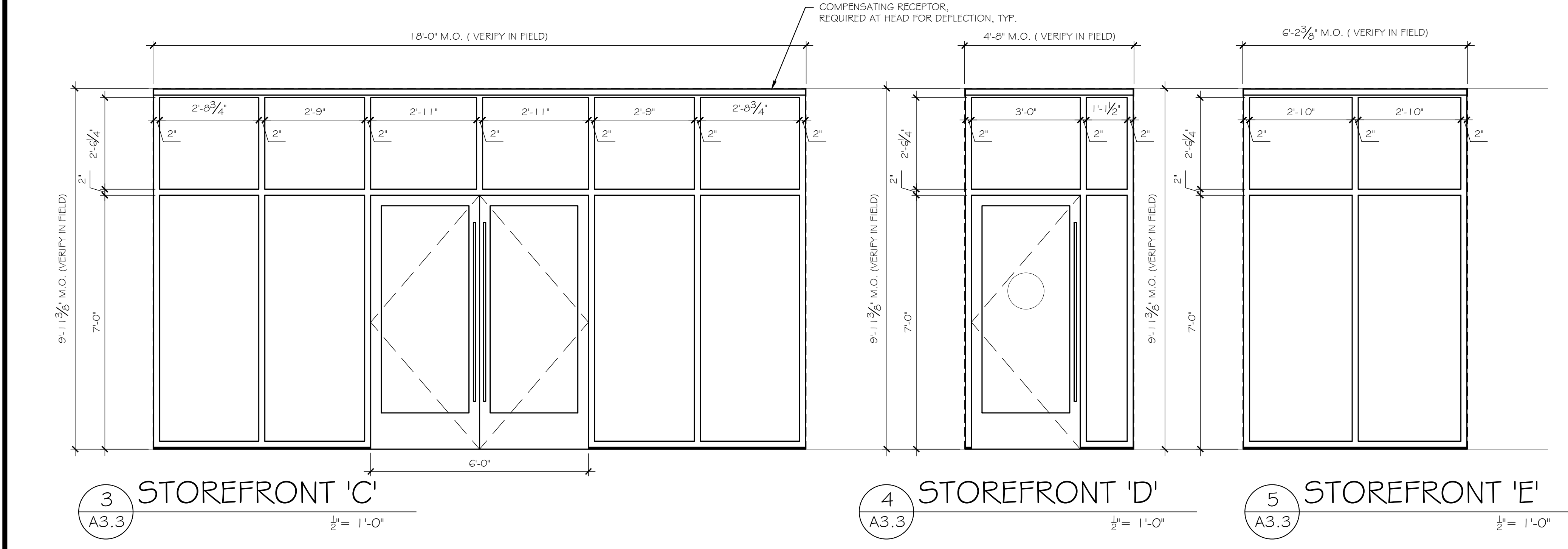
2 STOREFRONT 'B'
A3.3 1/8" = 1'-0"

1" CLEAR INSULATED SAFETY (TEMPERED) GLAZING, TYP.
THERMALLY BROKEN ANODIZED ALUMINUM STOREFRONT FRAMING, TYP.

COMPENSATING RECEPTOR, REQUIRED AT HEAD FOR DEFLECTION, TYP.

NOTE: FIELD VERIFY M.O. DIMENSIONS, (TYP.)

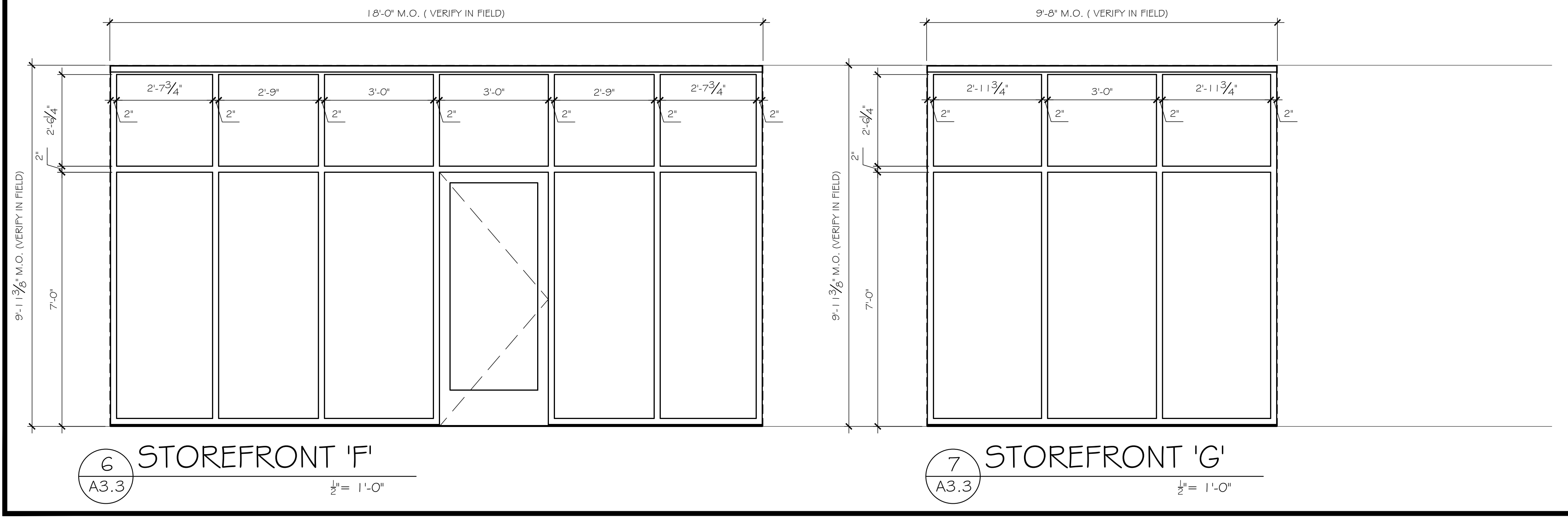
STOREFRONT BASIS OF DESIGN:
(STOREFRONT) KAWNEER TRIFAB VG 45 1T BASIS OF DESIGN
KAWNEER 360 INSULCLAD, ENTRANCE WIDE STILE, BASIS OF DESIGN
COLOR = CHARCOAL PERMAFLOUR
CENTER OF GLASS U-FACTOR .25 OR LESS SHGC .40 OR BETTER
CARDINAL GLASS LoE2-270 #2/CLEAR 1/8" GLASS 3/4" AIRSPACE ARGON FILLED, U-FACTOR .25
CARDINAL GLASS LoE2-270 #2/CLEAR 1/8" GLASS, SHGC .37
(TEMPERED SAFETY GLASS, INSIDE & OUTSIDE TYP.)



3 STOREFRONT 'C'
A3.3 1/8" = 1'-0"

4 STOREFRONT 'D'
A3.3 1/8" = 1'-0"

5 STOREFRONT 'E'
A3.3 1/8" = 1'-0"



6 STOREFRONT 'F'
A3.3 1/8" = 1'-0"

7 STOREFRONT 'G'
A3.3 1/8" = 1'-0"

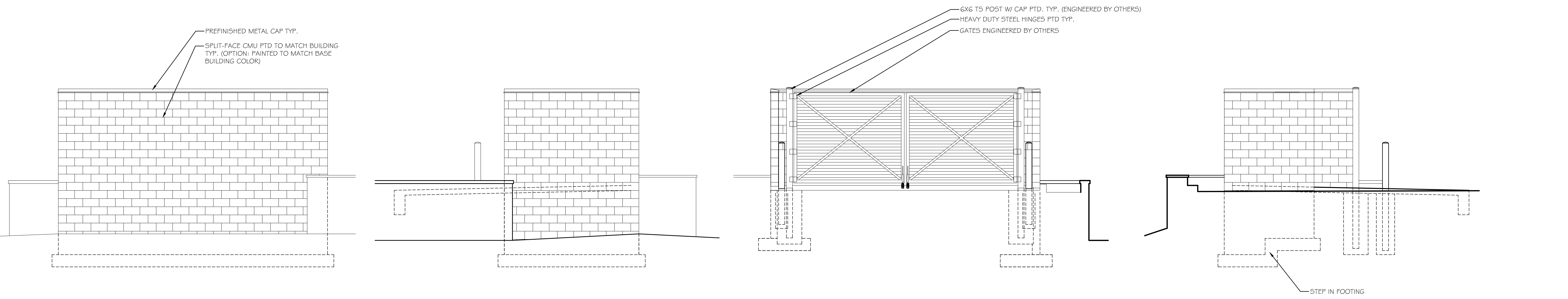
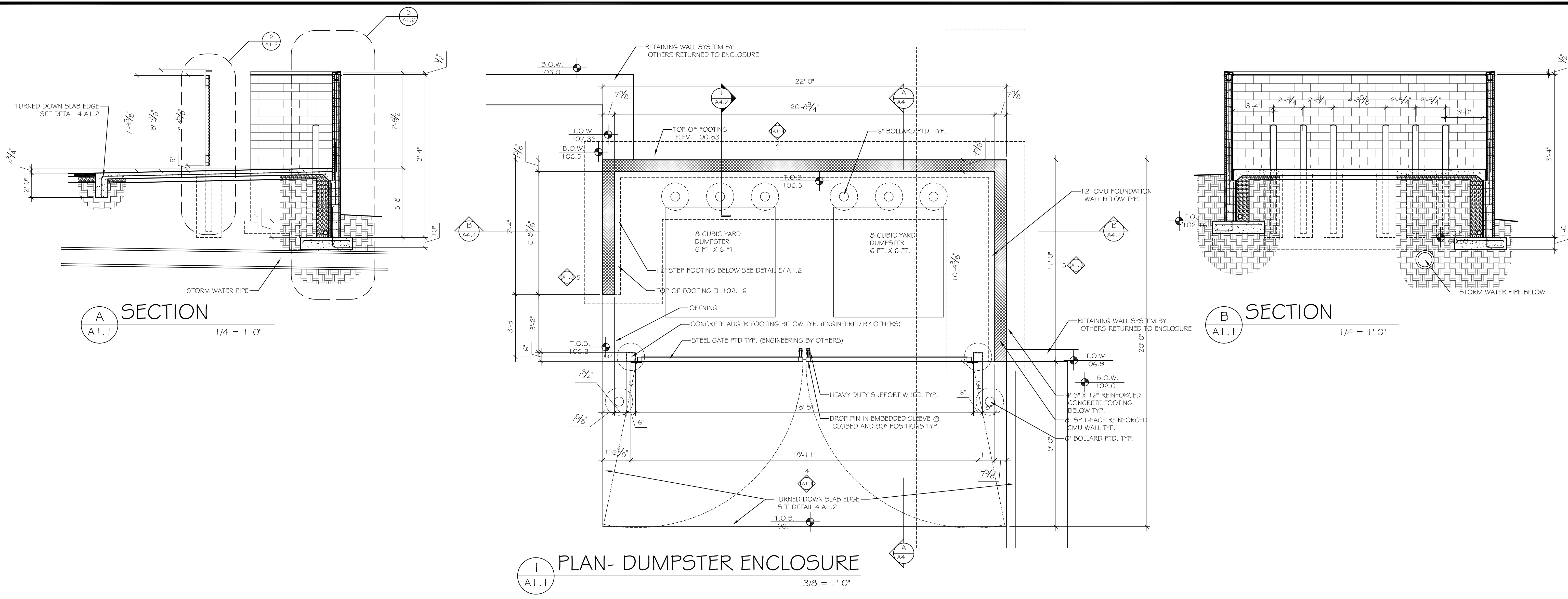
PRELIMINARY- NOT FOR CONSTRUCTION

Camden Retail
MAIN STREET ARCHITECTURE, P.C.
24 N. BUCKINGHAM STREET BERRYVILLE, VIRGINIA 22611 540353.1689



DATE 4-15-20
SCALE 1/8" = 1'-0"
DRAWN HAK
JOB 19061
SHEET

A3.3



2 ELEVATION
A1.1 1/4 = 1'-0"

3 ELEVATION
A1.1 1/4 = 1'-0"

4 ELEVATION
A1.1 1/4 = 1'-0"

5 ELEVATION
A1.1 1/4 = 1'-0"

REVISIONS	BY

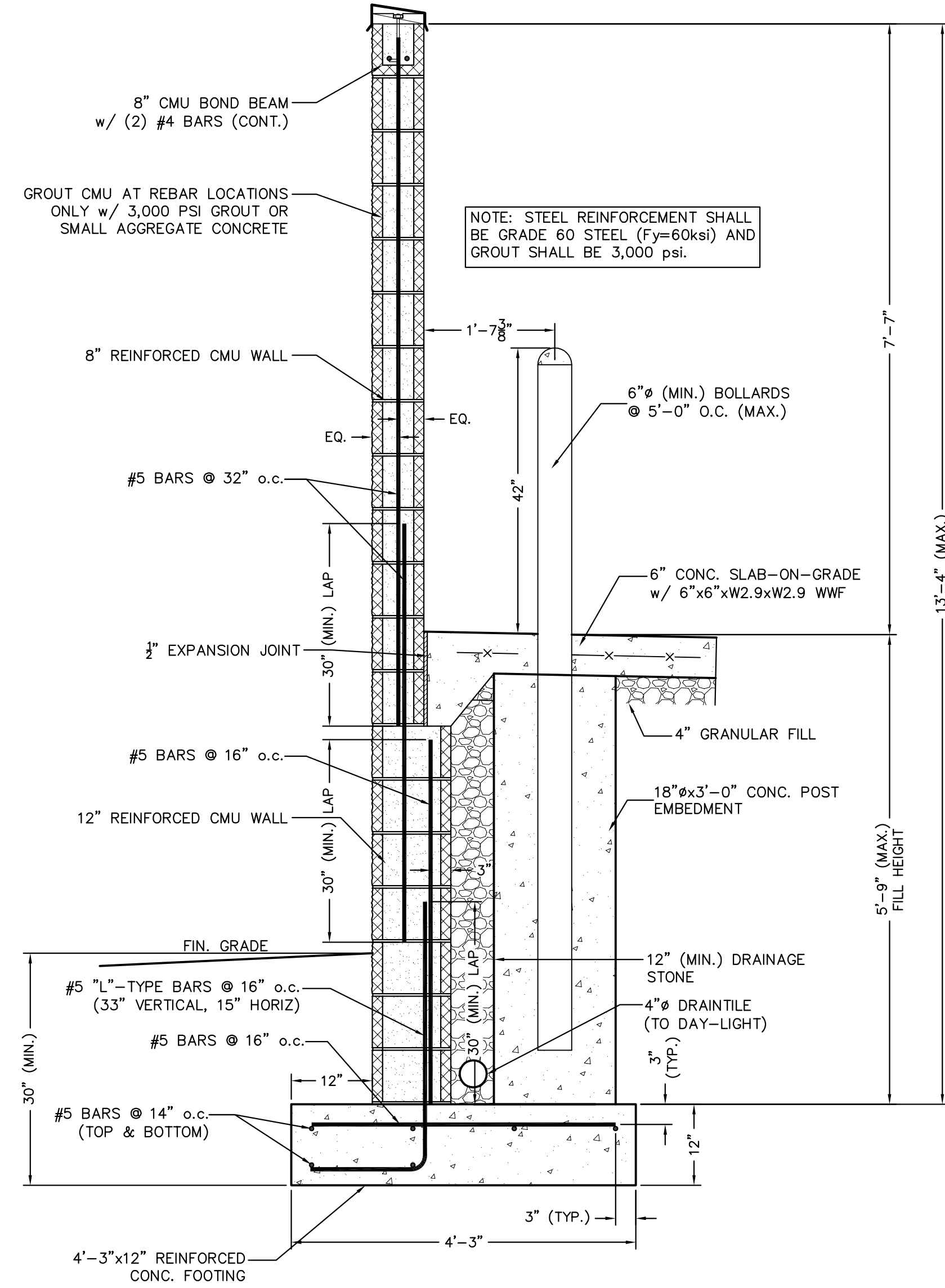
Crofton Dumpster Enclosure - 1060 Crain Hwy.

MSA
MAIN STREET ARCHITECTURE, P.C.
24 N. BUCKWASH STREET
BERRYVILLE, VIRGINIA 22611-1402
VOICE: 540.535.1669
FAX: 540.535.6014

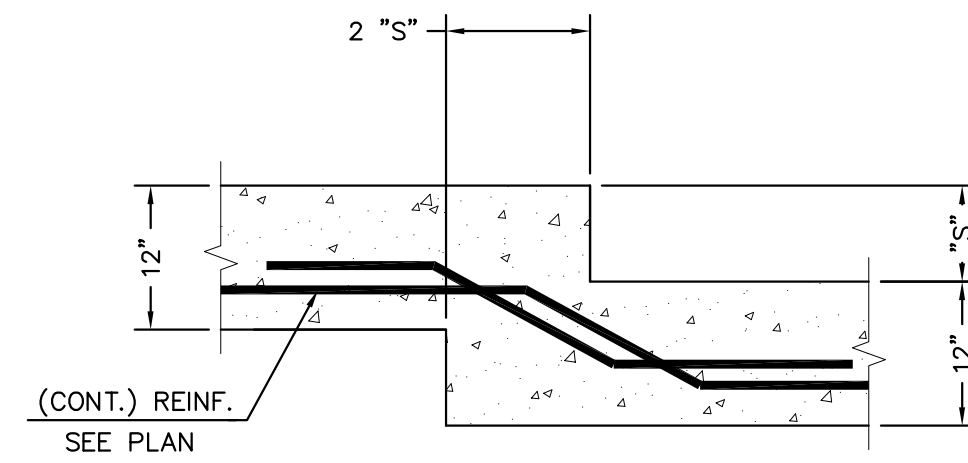
DATE: 6-14-18
SCALE:
DRAWN: HAK
JOB: 16031
SHEET:

A1.1

REVISIONS	BY

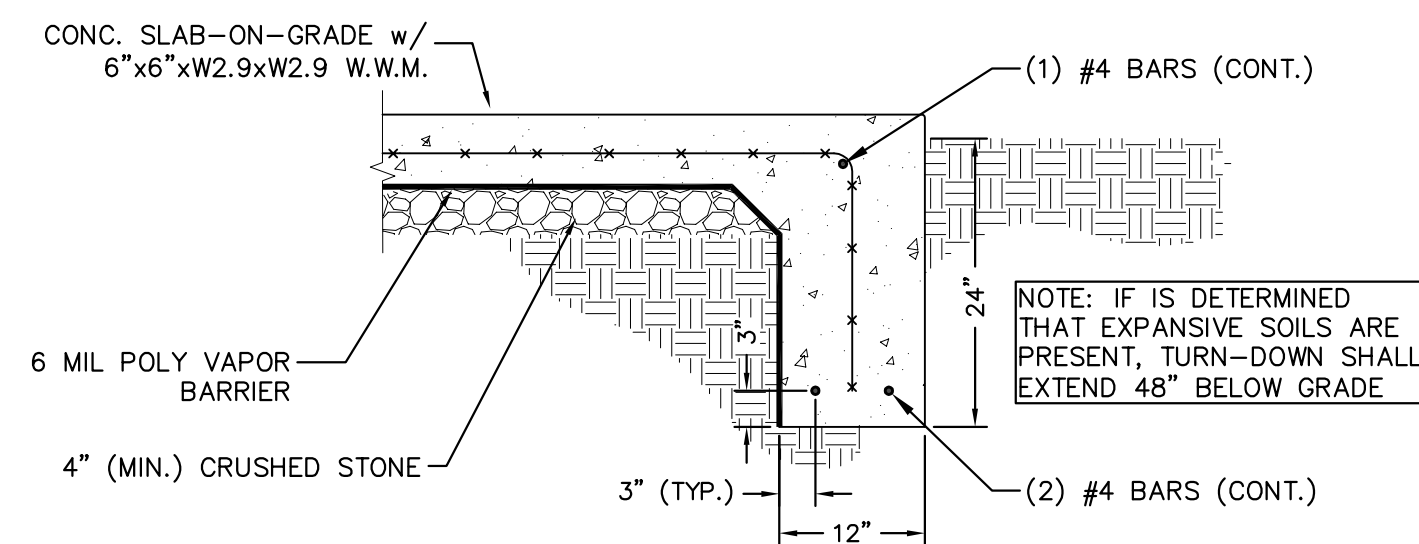


1 SECTION
A1.2 3/4 = 1'-0"

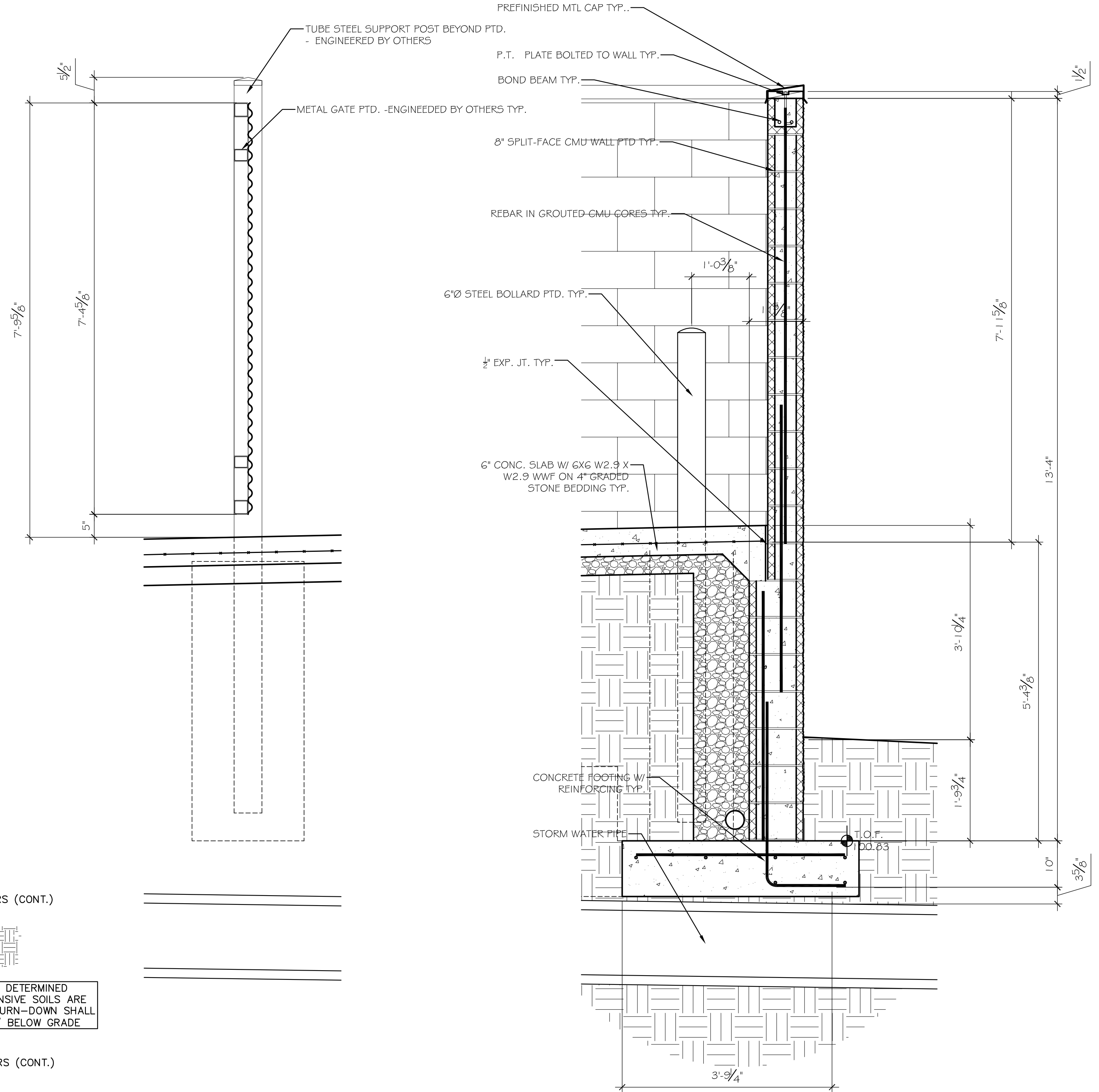


"S" MAX. = 2'-0"
"S" IN 8" INCREMENTS AT MASONRY WALLS

5 DETAIL
A1.2 3/4 = 1'-0"



4 DETAIL
A1.2 3/4 = 1'-0"



2 SECTION
A1.2 3/4 = 1'-0"

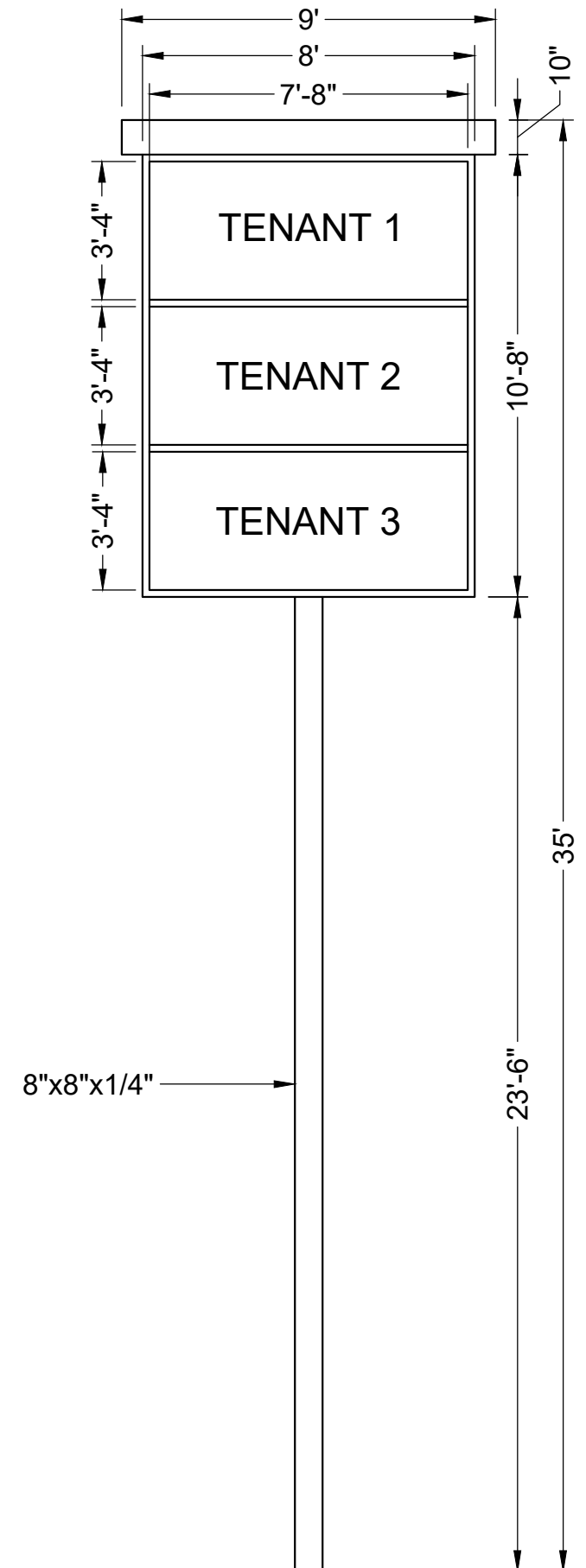
3 SECTION
A1.2 3/4 = 1'-0"

Crofton Dumpster Enclosure - 1060 Crain Hwy.

MSA
MAIN STREET ARCHITECTURE, P.C.
24 N. BUCKWORTH STREET
BERRYVILLE, VIRGINIA 22611-1602
VOICE: 540.535.1669 FAX: 540.535.6014

DATE: 6-14-18
SCALE:
DRAWN: HAK
JOB: 16031
SHEET:

A1.2



Notes:

1. Max Height: 35'
2. Max Sign Area: 99 SF
3. Double-Sided

Scale: 1/4" = 1'-0"